

Constipation

National Digestive Diseases Information Clearinghouse



National
Institute of
Diabetes and
Digestive
and Kidney
Diseases

NATIONAL
INSTITUTES
OF HEALTH

What Is Constipation?

Constipation is passage of small amounts of hard, dry bowel movements, usually fewer than three times a week. People who are constipated may find it difficult and painful to have a bowel movement. Other symptoms of constipation include feeling bloated, uncomfortable, and sluggish.

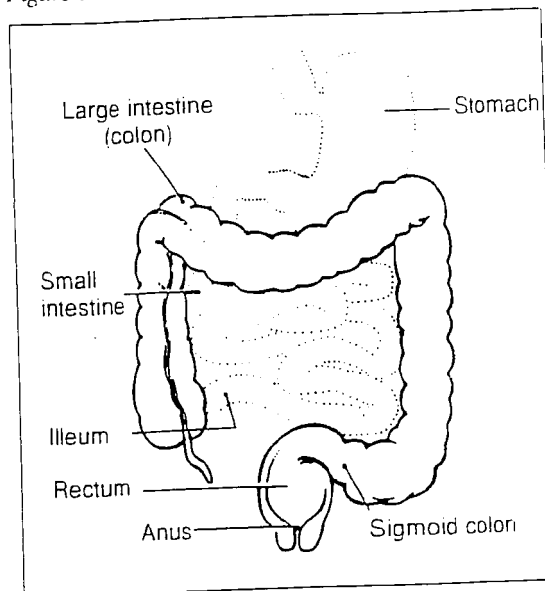
Many people think they are constipated when, in fact, their bowel movements are regular. For example, some people believe they are constipated, or irregular, if they do not have a bowel movement every day. However, there is no right number of daily or weekly bowel movements. Normal may be three times a day or three times a week depending on the person. In addition, some people naturally have firmer stools than others.

At one time or another almost everyone gets constipated. Poor diet and lack of exercise are usually the causes. In most cases, constipation is temporary and not serious. Understanding causes, prevention, and treatment will help most people find relief.

Who Gets Constipated?

According to the 1991 National Health Interview Survey, about 4½ million people in the United States say they are constipated most or all of the time. Those reporting constipation most often are women, children, and adults age 65 and over. Pregnant women also complain of constipation, and it is a common problem following childbirth or surgery.

Figure 1



Constipation is the most common gastrointestinal complaint in the United States, resulting in about 2 million annual visits to the doctor. However, most people treat themselves without seeking medical help, as is evident from the \$725 million Americans spend on laxatives each year.

What Causes Constipation?

To understand constipation, it helps to know how the colon (large intestine) works. As food moves through it, the colon absorbs water while forming waste products, or stool. Muscle contractions in the colon push the stool toward the rectum. By the time stool reaches the rectum, it is solid because most of the water has been absorbed. (See figure 1.)

The hard and dry stools of constipation occur when the colon absorbs too much water. This happens because the colon's muscle contractions are slow or sluggish, causing the stool to move through the colon too slowly. Figure 2 lists the most common causes of constipation.

Diet

The most common cause of constipation is a diet low in fiber found in vegetables, fruits, and whole grains and high in fats found in cheese, eggs, and meats. People who eat plenty of high-fiber foods are less likely to become constipated.

Fiber—soluble and insoluble—is the part of fruits, vegetables, and grains that the body cannot digest. Soluble fiber dissolves easily in water and takes on a soft, gel-like texture in the intestines. Insoluble fiber passes almost unchanged through the intestines. The bulk and soft texture of fiber help prevent hard, dry stools that are difficult to pass.

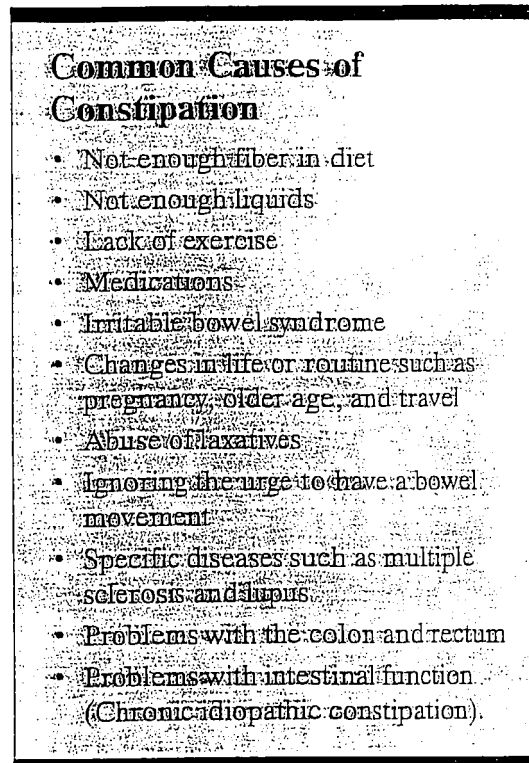
On average, Americans eat about 5 to 20 grams of fiber daily, short of the 20 to 35 grams recommended by the American Dietetic Association. Both children and adults eat too many refined and processed foods in which the natural fiber is removed.

A low-fiber diet also plays a key role in constipation among older adults. They often lack interest in eating and may choose fast foods low in fiber. In addition, loss of teeth may force older people to eat soft foods that are processed and low in fiber.

Not Enough Liquids

Liquids like water and juice add fluid to the colon and bulk to stools, making bowel movements softer and easier to pass. People who have problems with constipation should drink enough of these liquids every day, about eight 8-ounce glasses. Other liquids, like coffee and soft drinks, that contain caffeine seem to have a dehydrating effect.

Figure 2



Lack of Exercise

Lack of exercise can lead to constipation, although doctors do not know precisely why. For example, constipation often occurs after an accident or during an illness when one must stay in bed and cannot exercise.

Medications

Pain medications (especially narcotics), antacids that contain aluminum, antispasmodics, antidepressants, iron supplements, diuretics, and anticonvulsants for epilepsy can slow passage of bowel movements.

Irritable Bowel Syndrome (IBS)

Some people with IBS, also known as spastic colon, have spasms in the colon that affect bowel movements. Constipation and diarrhea often alternate, and abdominal cramping, gassiness, and bloating are other common

complaints. Although IBS can produce lifelong symptoms, it is not a life-threatening condition. It often worsens with stress, but there is no specific cause or anything unusual that the doctor can see in the colon.

Changes in Life or Routine

During pregnancy, women may be constipated because of hormonal changes or because the heavy uterus compresses the intestine. Aging may also affect bowel regularity because a slower metabolism results in less intestinal activity and muscle tone. In addition, people often become constipated when traveling because their normal diet and daily routines are disrupted.

Abuse of Laxatives

Myths about constipation have led to a serious abuse of laxatives. This is common among older adults who are preoccupied with having a daily bowel movement.

Laxatives usually are not necessary and can be habit-forming. The colon begins to rely on laxatives to bring on bowel movements. Over time, laxatives can damage nerve cells in the colon and interfere with the colon's natural ability to contract. For the same reason, regular use of enemas can also lead to a loss of normal bowel function.

Ignoring the Urge to Have a Bowel Movement

People who ignore the urge to have a bowel movement may eventually stop feeling the urge, which can lead to constipation. Some people delay having a bowel movement because they do not want to use toilets outside the home. Others ignore the urge because of emotional stress or because they are too busy. Children may postpone having a bowel movement because of stressful toilet training or because they do not want to interrupt their play.

Specific Diseases

Diseases that cause constipation include neurological disorders, metabolic and endocrine disorders, and systemic conditions that affect organ systems. These disorders can slow the movement of stool through the colon, rectum, or anus. Figure 3 lists the diseases that cause constipation.

Problems with the Colon and Rectum

Intestinal obstruction, scar tissue (adhesions), diverticulosis, tumors, colorectal stricture, Hirschsprung's disease, or cancer can compress, squeeze, or narrow the intestine and rectum and cause constipation.

Figure 3

Diseases That Cause Constipation

Neurological disorders that may cause constipation include:

- Multiple sclerosis
- Parkinson's disease
- Chronic idiopathic intestinal pseudo-obstruction
- Stroke
- Spinal cord injuries.

Metabolic and endocrine conditions include:

- Diabetes
- Underactive or overactive thyroid gland
- Uremia.

Systemic disorders include:

- Amyloidosis
- Lupus
- Scleroderma.

Problems with Intestinal Function (Chronic Idiopathic Constipation)

Also known as functional constipation, chronic idiopathic (of unknown origin) constipation is rare. However, some people are chronically constipated and do not respond to standard treatment. This chronic constipation may be related to multiple problems with hormonal control or with nerves and muscles in the colon, rectum, or anus. Functional constipation occurs in both children and adults and is most common in women.

Colonic inertia and delayed transit are two types of functional constipation caused by decreased muscle activity in the colon. These syndromes may affect the entire colon or may be confined to the left or lower (sigmoid) colon.

Functional constipation that stems from abnormalities in the structure of the anus and rectum is known as anorectal dysfunction, or anismus. These abnormalities result in an inability to relax the rectal and anal muscles that allow stool to exit.

What Diagnostic Tests Are Used?

Most people do not need extensive testing and can be treated with changes in diet and exercise. For example, in young people with mild symptoms, a medical history and physical examination may be all the doctor needs to suggest successful treatment. The tests the doctor performs depends on the duration and severity of the constipation, the person's age, and whether there is blood in stools, recent changes in bowel movements, or weight loss.

Medical History

The doctor may ask a patient to describe his or her constipation, including duration of symptoms, frequency of bowel movements, consistency of stools, presence of blood in the

stool, and toilet habits (how often and where one has bowel movements). Recording eating habits, medication, and level of physical activity or exercise also helps the doctor determine the cause of constipation.

Physical Examination

A physical exam may include a digital rectal exam with a gloved, lubricated finger to evaluate the tone of the muscle that closes off the anus (anal sphincter) and to detect tenderness, obstruction, or blood. In some cases, blood and thyroid tests may be necessary.

Extensive testing usually is reserved for people with severe symptoms, for those with sudden changes in number and consistency of bowel movements or blood in the stool, and for older adults. Because of an increased risk of colorectal cancer in older adults, the doctor may use these tests to rule out a diagnosis of cancer:

- Barium enema x-ray
- Sigmoidoscopy or colonoscopy
- Colorectal transit study
- Anorectal function tests.

Barium Enema X-Ray

A barium enema x-ray involves viewing the rectum, colon, and lower part of the small intestine to locate any problems. This part of the digestive tract is known as the bowel. This test may show intestinal obstruction and Hirschsprung's disease, a lack of nerves within the colon.

The night before the test, bowel cleansing, also called bowel prep, is necessary to clear the lower digestive tract. The patient drinks 8 ounces of a special liquid every 15 minutes for about 4 hours. This liquid flushes out the bowel. A clean bowel is important, because even a small amount of stool in the colon can hide details and result in an inaccurate exam.

Because the colon does not show up well on an x-ray, the doctor fills the organs with a barium enema, a chalky liquid to make the area visible. Once the mixture coats the organs, x-rays are taken that reveal their shape and condition. The patient may feel some abdominal cramping when the barium fills the colon, but usually feels little discomfort after the procedure. Stools may be a whitish color for a few days after the exam.

Sigmoidoscopy or Colonoscopy

An examination of the rectum and lower colon (sigmoid) is called a sigmoidoscopy. An examination of the rectum and entire colon is called a colonoscopy.

The night before a sigmoidoscopy, the patient usually has a liquid dinner and takes an enema at bedtime. A light breakfast and a cleansing enema an hour before the test may also be necessary.

To perform a sigmoidoscopy, the doctor uses a long, flexible tube with a light on the end called a sigmoidoscope to view the rectum and lower colon. First, the doctor examines the rectum with a gloved, lubricated finger. Then, the sigmoidoscope is inserted through the anus into the rectum and lower colon. The procedure may cause a mild sensation of wanting to move the bowels and abdominal pressure. Sometimes the doctor fills the organs with air to get a better view. The air may cause mild cramping.

To perform a colonoscopy, the doctor uses a flexible tube with a light on the end called a colonoscope to view the entire colon. This tube is longer than a sigmoidoscope. The same bowel cleansing used for the barium x-ray is needed to clear the bowel of waste. The patient is lightly sedated before the exam. During the exam, the patient lies on his or her side and the doctor inserts the tube

through the anus and rectum into the colon. If an abnormality is seen, the doctor can use the colonoscope to remove a small piece of tissue for examination (biopsy). The patient may feel gassy and bloated after the procedure.

Colorectal Transit Study

This test, reserved for those with chronic constipation, shows how well food moves through the colon. The patient swallows capsules containing small markers, which are visible on x-ray. The movement of the markers through the colon is monitored with abdominal x-rays taken several times 3 to 7 days after the capsule is swallowed. The patient follows a high-fiber diet during the course of this test.

Anorectal Function Tests

These tests diagnose constipation caused by abnormal functioning of the anus or rectum (anorectal function). Anorectal manometry evaluates anal sphincter muscle function. A catheter or air-filled balloon inserted into the anus is slowly pulled back through the sphincter muscle to measure muscle tone and contractions.

Defecography is an x-ray of the anorectal area that evaluates completeness of stool elimination, identifies anorectal abnormalities, and evaluates rectal muscle contractions and relaxation. During the exam, the doctor fills the rectum with a soft paste that is the same consistency as stool. The patient sits on a toilet positioned inside an x-ray machine and then relaxes and squeezes the anus and expels the solution. The doctor studies the x-rays for anorectal problems that occurred while the patient emptied the paste.

How Is Constipation Treated?

Although treatment depends on the cause, severity, and duration, in most cases dietary and lifestyle changes will help relieve symptoms and help prevent constipation.

Diet

A diet with enough fiber (20 to 35 grams each day) helps form soft, bulky stool. A doctor or dietitian can help plan an appropriate diet. High-fiber foods include beans; whole grains and bran cereals; fresh fruits; and vegetables such as asparagus, brussels sprouts, cabbage, and carrots. For people prone to constipation, limiting foods that have little or no fiber such as ice cream, cheese, meat, and processed foods is also important.

Lifestyle Changes

Other changes that can help treat and prevent constipation include drinking enough water and other liquids such as fruit and vegetable juices and clear soup, engaging in daily exercise, and reserving enough time to have a bowel movement. In addition, the urge to have a bowel movement should not be ignored.

Laxatives

Most people who are mildly constipated do not need laxatives. However, for those who have made lifestyle changes and are still constipated, doctors may recommend laxatives or enemas for a limited time. These treatments can help retrain a chronically sluggish bowel. For children, short-term treatment with laxatives, along with retraining to establish regular bowel habits, also helps prevent constipation.

A doctor should determine when a patient needs a laxative and which form is best. Laxatives taken by mouth are available in liquid, tablet, gum, powder, and granule forms. They work in various ways:

- Bulk-forming laxatives generally are considered the safest but can interfere with absorption of some medicines. These laxatives, also known as fiber supplements, are taken with water. They absorb water in the intestine and make the stool softer. Brand names include Metamucil™, Citrucel™, and Serutan™.

- Stimulants cause rhythmic muscle contractions in the intestines. Brand names include Correctol™, Ex-Lax™, Dulcolax™, Purge™, Feen-A-Mint™, and Senokot™.
- Stool softeners provide moisture to the stool and prevent dehydration. These laxatives are often recommended after childbirth or surgery. Products include Colace™, Dialose™, and Surfak™.
- Lubricants grease the stool enabling it to move through the intestine more easily. Mineral oil is the most common lubricant.
- Saline laxatives act like a sponge to draw water into the colon for easier passage of stool. Laxatives in this group include Milk of Magnesia™, Citrate of Magnesia™, and Haley's M-O™.

People who are dependent on laxatives need to slowly stop using the medications. A doctor can assist in this process. In most people, this restores the colon's natural ability to contract.

Other Treatment

Treatment may be directed at a specific cause. For example, the doctor may recommend discontinuing medication or performing surgery to correct an anorectal problem such as rectal prolapse.

People with chronic constipation caused by anorectal dysfunction can use biofeedback to retrain the muscles that control release of bowel movements. Biofeedback involves using a sensor to monitor muscle activity that at the same time can be displayed on a computer screen allowing for an accurate assessment of body functions. A health care professional uses this information to help the patient learn how to use these muscles.

Surgical removal of the colon may be an option for people with severe symptoms caused by colonic inertia. However, the benefits of this surgery must be weighed against possible complications, which include abdominal pain and diarrhea.

Can Constipation Be Serious?

Sometimes constipation can lead to complications. These complications include hemorrhoids caused by straining to have a bowel movement or anal fissures (tears in the skin around the anus) caused when hard stool stretches the sphincter muscle. As a result, rectal bleeding may occur that appears as bright red streaks on the surface of the stool. Treatment for hemorrhoids may include warm tub baths, ice packs, and application of a cream to the affected area. Treatment for anal fissure may include stretching the sphincter muscle or surgical removal of tissue or skin in the affected area.

Sometimes straining causes a small amount of intestinal lining to push out from the anal opening. This condition is known as rectal prolapse and may lead to secretion of mucus from the anus. Usually, eliminating the cause of the prolapse such as straining or coughing is the only treatment necessary. Severe or chronic prolapse requires surgery to strengthen and tighten the anal sphincter muscle or to repair the prolapsed lining.

Constipation may also cause hard stool to pack the intestine and rectum so tightly that the normal pushing action of the colon is not enough to expel the stool. This condition, called fecal impaction, occurs most often in children and older adults. An impaction can be softened with mineral oil taken by mouth and an enema. After softening the impaction, the doctor may break up and remove part of the hardened stool by inserting one or two fingers in the anus.

Points to Remember

1. Constipation affects almost everyone at one time or another.
2. Many people think they are constipated when, in fact, their bowel movements are regular.
3. The most common causes of constipation are poor diet and lack of exercise.
4. Additional causes of constipation include medications, irritable bowel syndrome, abuse of laxatives, and specific diseases.
5. A medical history and physical examination may be the only diagnostic tests needed for the doctor to suggest treatment.
6. In most cases, following these simple tips will help relieve symptoms and prevent recurrence of constipation:
 - Eat a well-balanced, high-fiber diet that includes beans, bran, whole grains, fresh fruits, and vegetables.
 - Drink plenty of liquids.
 - Exercise regularly.
 - Set aside time after breakfast or dinner for undisturbed visits to the toilet.
 - Do not ignore the urge to have a bowel movement.
 - Understand that normal bowel habits vary.
 - Whenever a significant or prolonged change in bowel habits occurs, check with a doctor.
7. Most people with mild constipation do not need laxatives. However, doctors may recommend laxatives for a limited time for people with chronic constipation.